

# Leather Work & Welding Gloves

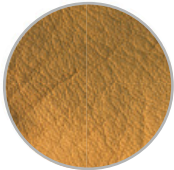


Driver | Leather Palm | Welding

# Leather Gloves Guide

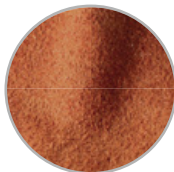
## Types of Leather and their Difference

Different types of leather are used in gloves for an array of uses. The most common leather used is cowhide leather, which has two types; Cow Grain and Cow Split.



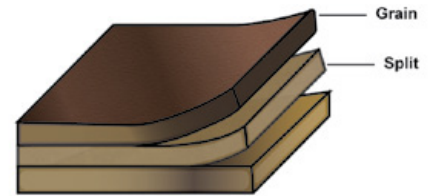
### Cow Grain Leather

The outer layer of the hide is naturally water repellent and very durable in volatile conditions. Cow grain leather is the thickest and most durable type of leather.



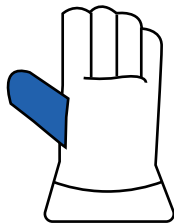
### Cow Split Leather

The bottom layer of the hide. It has better abrasion and heat resistance. Also, provides smoother texture and flexibility.



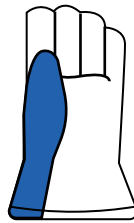
## Thumb Types

Different types of thumb designs are used in leather gloves which offer better dexterity depending on the different work environments. The most common are straight thumb, wing thumb, and keystone thumb.



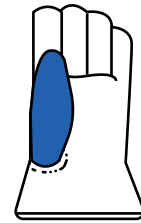
Winged Thumb

Is a continuous full leather thumb with a reinforced sewn in the bottom. Its design is excellent for gripping work like screw, hammer, shoveling.



Straight Thumb

This design has stitching on the inside of the glove, which provides an extension of the life of the glove, this avoiding unpicking. It's design is excellent for push or open handed work



Keystone Thumb

This design has the thumb separated from the glove, stitching it in a way that provides greater comfort to the user, being one of the most versatile.

## Special Features



It's the highest quality leather available. It has had imperfections removed or corrected using different methods such as sanding or buffing, giving an excellent finish and a better feel when using the glove.



It is one of the most resistant commercial yarns of all, it is made for applications in which the contact with heat is constant since it resists high heat temperatures and remains firm without any risk of unraveling.



Coated gloves with special insert layers that repel water to keep your hands dry or wet, rainy or snow conditions, providing excellent grip and comfort.

### EN 12477

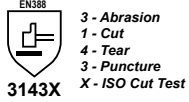
EN 12477 describes how welding gloves should be made to provide adequate hand and fist protection, welding gloves should be tested based on EN388:2016 and EN 407:2004.

**Type A** refers to gloves with high protection but with lower dexterity and flexibility.

**Type B** refers to gloves with low protection but with good dexterity and flexibility.

### Cow Grain Leather Driver Gloves

#### GG301



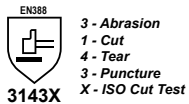
3 - Abrasion  
1 - Cut  
4 - Tear  
3 - Puncture  
X - ISO Cut Test



Hanging Card Ref.	12 Pack Ref.	Size
GG301SC	GG301S	S (7")
GG301MC	GG301M	M (8")
GG301LC	GG301L	L (9")
GG301XLC	GG301XL	XL (10")
GG301XXLC	GG301XXL	XXL (11")

### Cow Grain Leather Driver Gloves

#### GG304



3 - Abrasion  
1 - Cut  
4 - Tear  
3 - Puncture  
X - ISO Cut Test



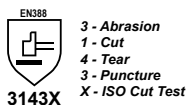
• Sewn with Aramid Thread



Hanging Card Ref.	12 Pack Ref.	Size
GG302SC	GG302S	S (7")
GG302MC	GG302M	M (8")
GG302LC	GG302L	L (9")
GG302XLC	GG302XL	XL (10")
GG302XXLC	GG302XXL	XXL (11")

### Cow Grain Leather Driver Gloves

#### GG306



3 - Abrasion  
1 - Cut  
4 - Tear  
3 - Puncture  
X - ISO Cut Test



• Keystone Thumb comfortable fit



Hanging Card Ref.	12 Pack Ref.	Size
GG306SC	GG306S	S (7")
GG306MC	GG306M	M (8")
GG306LC	GG306L	L (9")
GG306XLC	GG306XL	XL (10")
GG306XXLC	GG306XXL	XXL (11")

### Cow Grain Leather Driver Gloves

#### GG307



4 - Abrasion  
1 - Cut  
4 - Tear  
3 - Puncture  
X - ISO Cut Test

• Reinforced Palm

• Keystone Thumb Comfortable Fit

• Cow Grain Leather

• Shirred Elastic Wrist

Hanging Card Ref.	12 Pack Ref.	Size
GG307SC	GG307S	S (7")
GG307MC	GG307M	M (8")
GG307LC	GG307L	L (9")
GG307XLC	GG307XL	XL (10")
GG307XXLC	GG307XXL	XXL (11")

### Cow Split Leather Driver Gloves

#### GG303



3 - Abrasion  
1 - Cut  
4 - Tear  
3 - Puncture  
X - ISO Cut Test

• Keystone Thumb comfortable fit

• Cow Split Leather

• Shirred Elastic Wrist

Hanging Card Ref.	12 Pack Ref.	Size
GG303SC	GG303S	S (7")
GG303MC	GG303M	M (8")
GG303LC	GG303L	L (9")
GG303XLC	GG303XL	XL (10")
GG303XXLC	GG303XXL	XXL (11")

### Cow Split Leather Driver Gloves

#### GG305



4 - Abrasion  
1 - Cut  
3 - Tear  
3 - Puncture  
X - ISO Cut Test

• Keystone Thumb Comfortable Fit

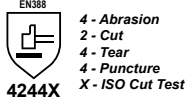
• Cow Split Leather

• Shirred Elastic Wrist

Hanging Card Ref.	12 Pack Ref.	Size
GG305SC	GG305S	S (7")
GG305MC	GG305M	M (8")
GG305LC	GG305L	L (9")
GG305XLC	GG305XL	XL (10")
GG305XXLC	GG305XXL	XXL (11")

## Cow Split Leather Palm Gloves

### GG320



• **Knuckle Protection**

Hanging Card Ref.	12 Pack Ref.	Size
GG320MC	GG320M	M (8")
GG320LC	GG320L	L (9")
GG320XLC	GG320XL	XL (10")

• **Rubberized safety cuff**



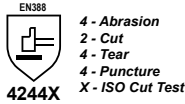
• **Reinforced palm, thumb & index**

• **Cow Split Leather**



## Cow Split Leather Palm Gloves

### GG321



• **Knuckle Protection**

Hanging Card Ref.	12 Pack Ref.	Size
GG321MC	GG321M	M (8")
GG321LC	GG321L	L (9")
GG321XLC	GG321XL	XL (10")

• **Rubberized safety cuff**



• **Reinforced palm, thumb & index**

• **Cow Split Leather**

• **Sewn with Aramid thread**



## Cow Split Leather Palm Gloves

### GG322



• **Rubberized safety cuff**

• **High Visibility**

Hanging Card Ref.	12 Pack Ref.	Size
GG322MC	GG322M	M (8")
GG322LC	GG322L	L (9")
GG322XLC	GG322XL	XL (10")



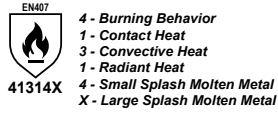
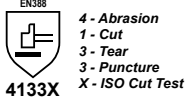
• **Reinforced palm, thumb & index**

• **Cow Split Leather**



## Cow Split Leather Welding Gloves

**GG330**



Hanging Card Ref. Color  
GG330 ● Gray

• 16" overall length

• Sewn with Aramid Thread

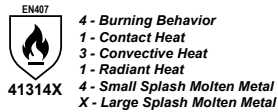
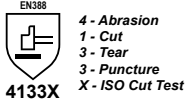


• Cow Split Leather

• Lined

## Cow Split Leather Welding Gloves

**GG331**



Hanging Card Ref. Color  
GG331 ● Indigo & Gray

• 16" overall length

• Sewn with Aramid Thread



• Reinforced palm

• Cow Split Leather

• Lined

